

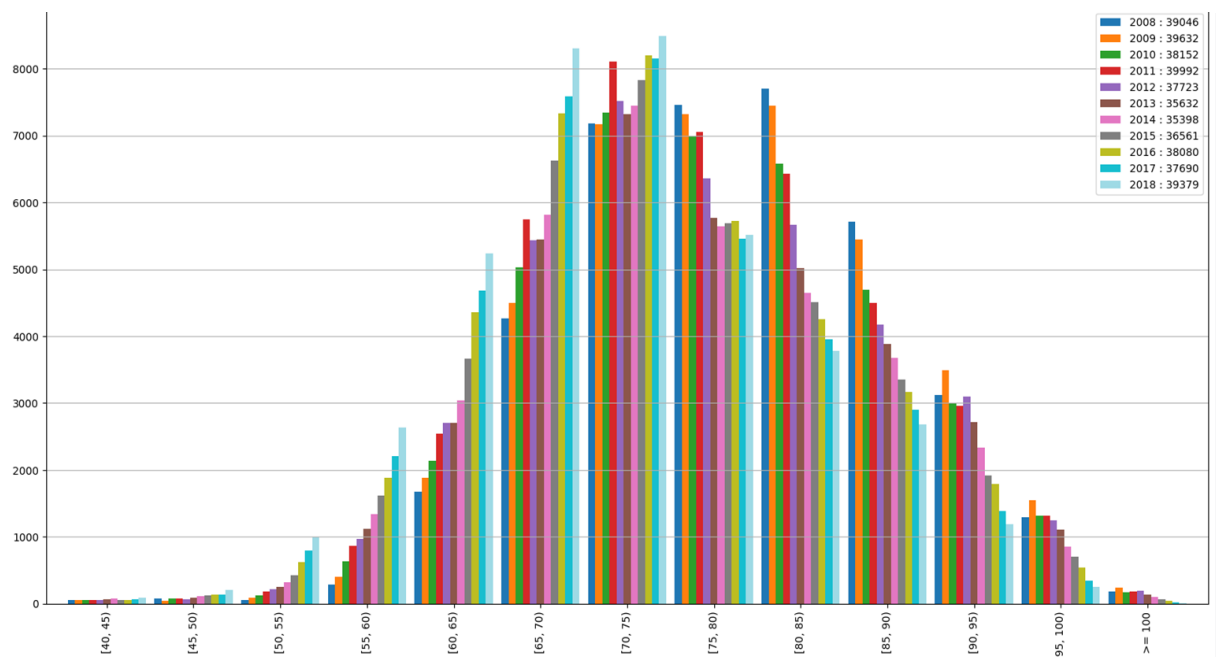
Supplements

1. Table (excel):

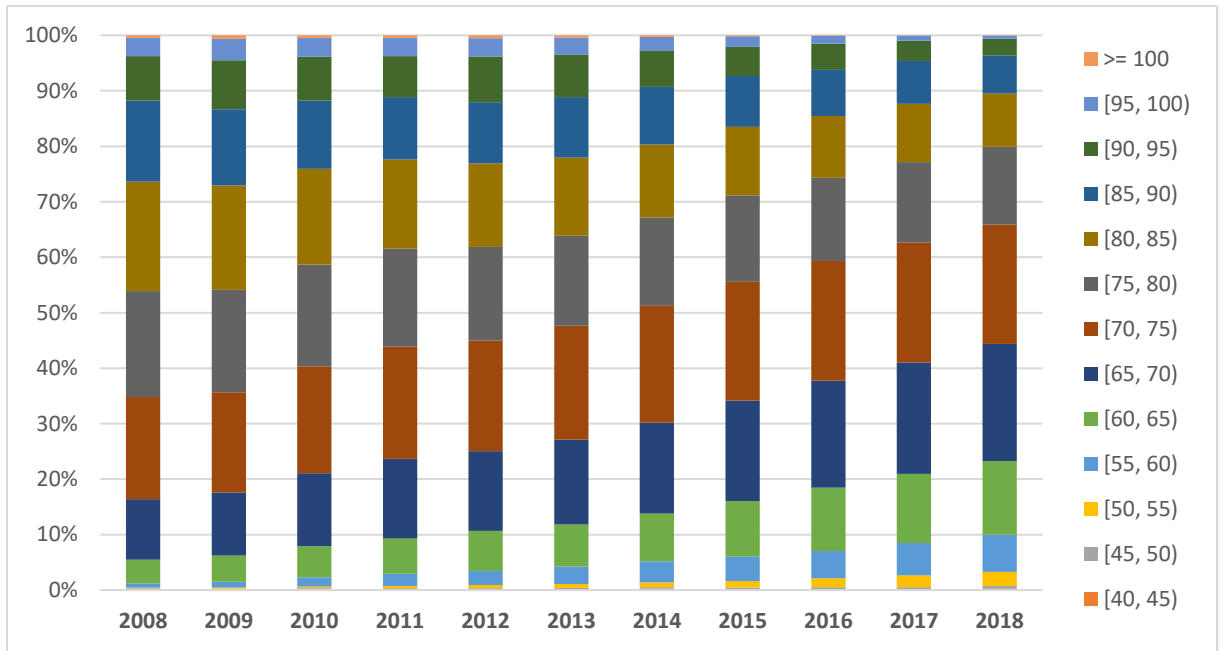
- a. Codes used to select populations.
- b. software
- c. Number of men included with prostate cancer and in the control population according to age groups, French regions, and years of inclusion.
- d. Distribution of first PSA screening according to age groups in 2018, French regions, and years of inclusion.
- e. Age at first treatment. Delay between radical prostatectomy, salvage radiotherapy and salvage castration. Delay between Castration and Chemotherapy
- f. Age specific mortality in PC and control (NoPC) populations according to continental regions
- g. Age specific mortality and overall survival according the first management
- h. Implementation of first and second management lines
- i. Castration > 2 years
- j. Age specific mortality according to first line management of PC compared to Control population (No PC)

2. Figures

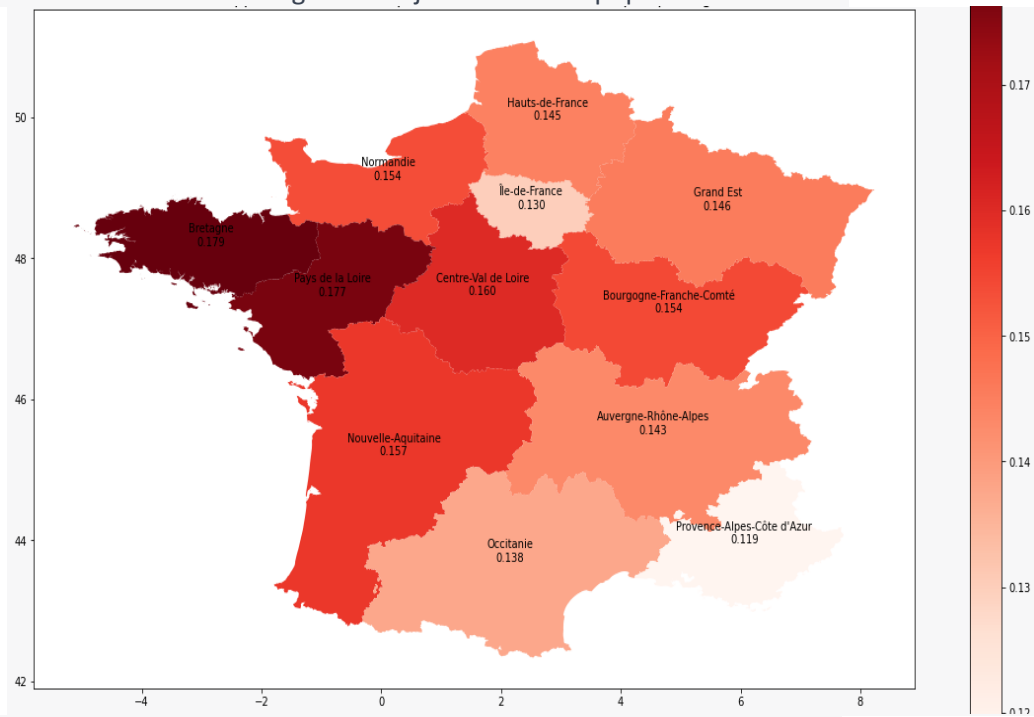
a-Distribution of PC diagnosis and years of diagnosis.



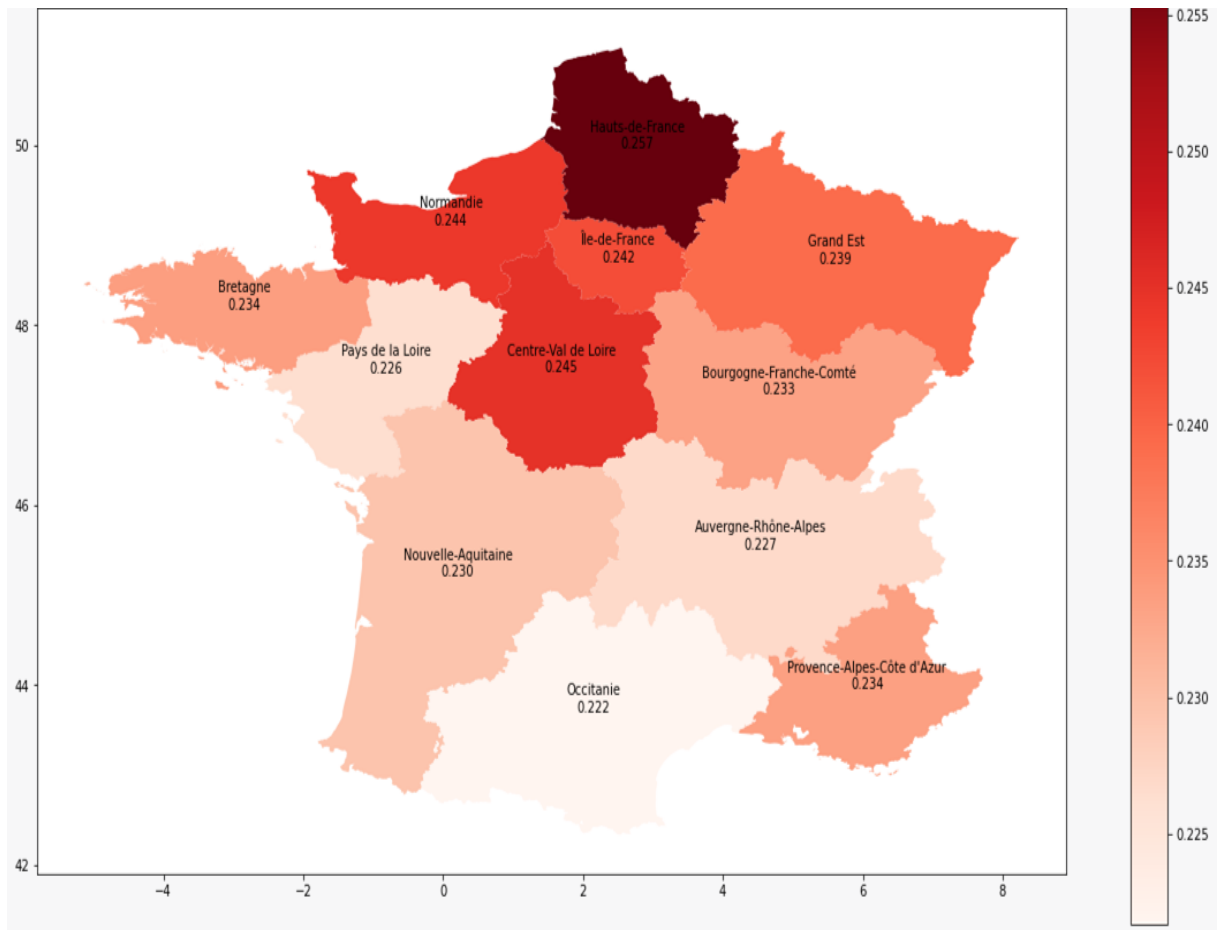
b-Distribution of PC diagnosed according to years and age at inclusion.



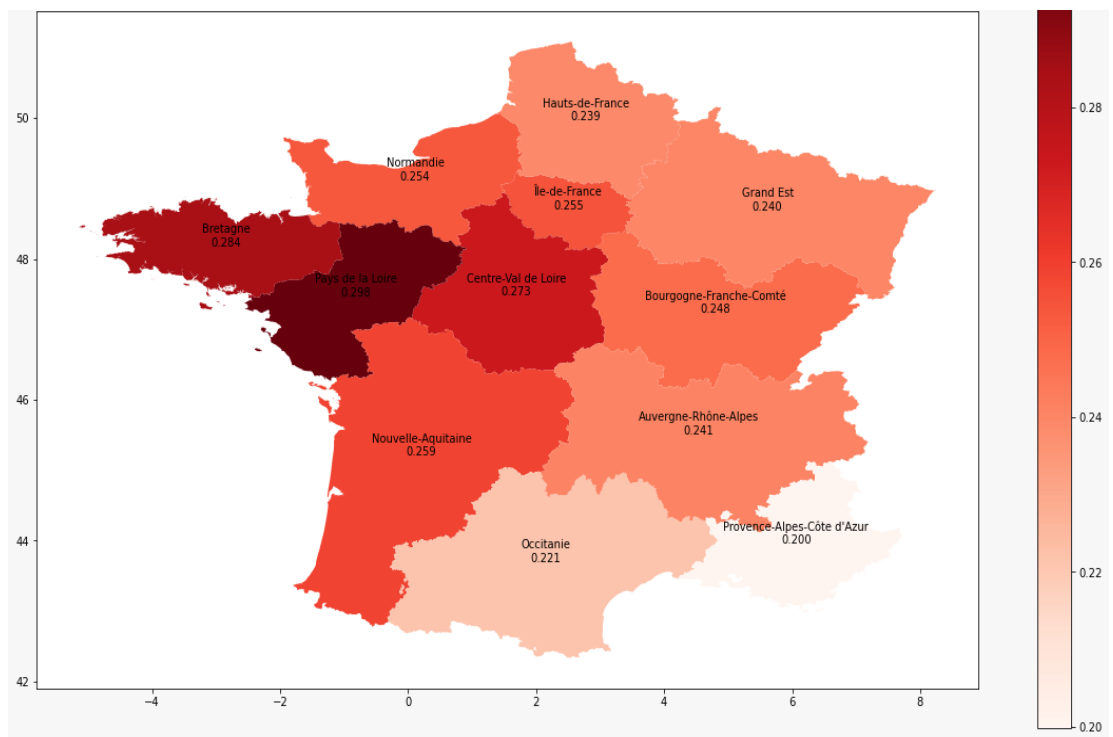
c-Regional distribution of PC diagnosed adjusted on total population observed.



d-Regional distribution of death with PC adjusted on deaths on PC population.

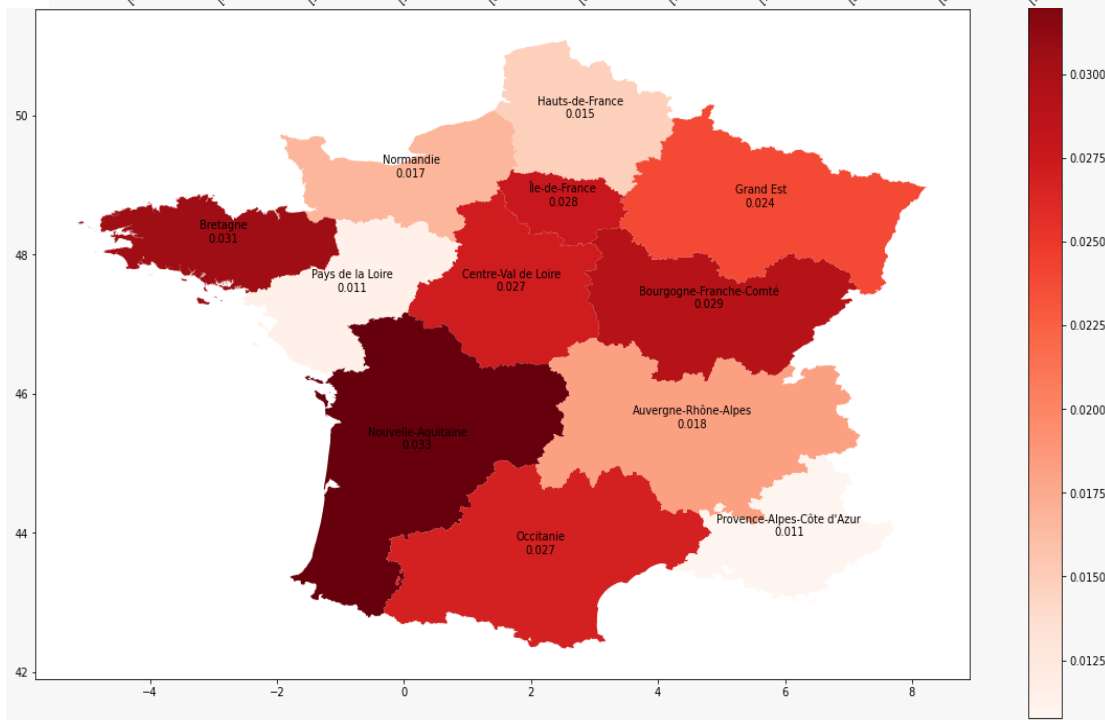
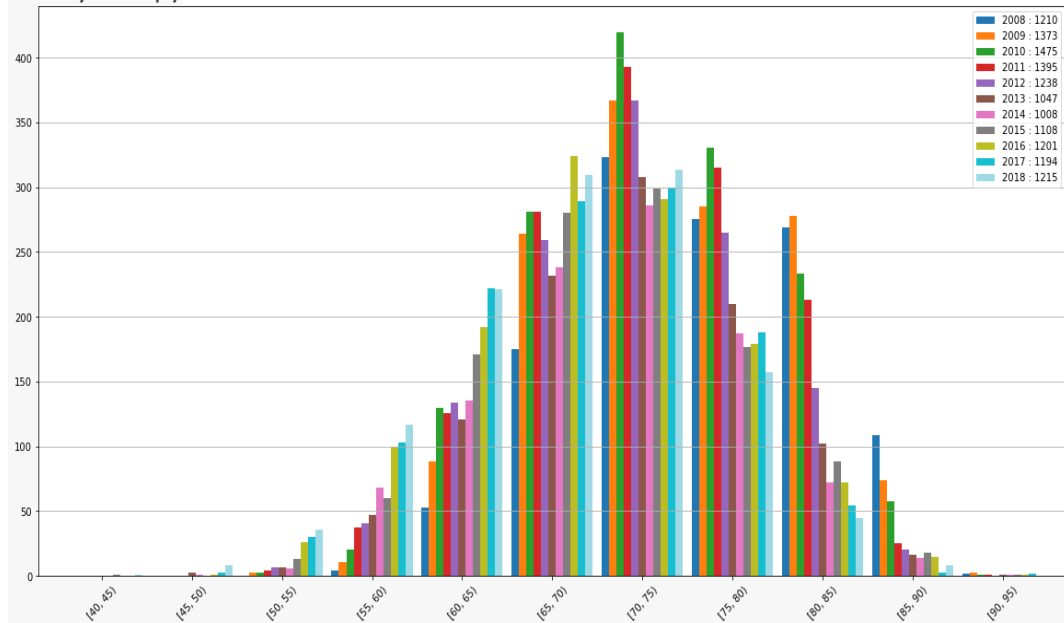


e-Regional distribution of death with PC adjusted on deaths on control population.

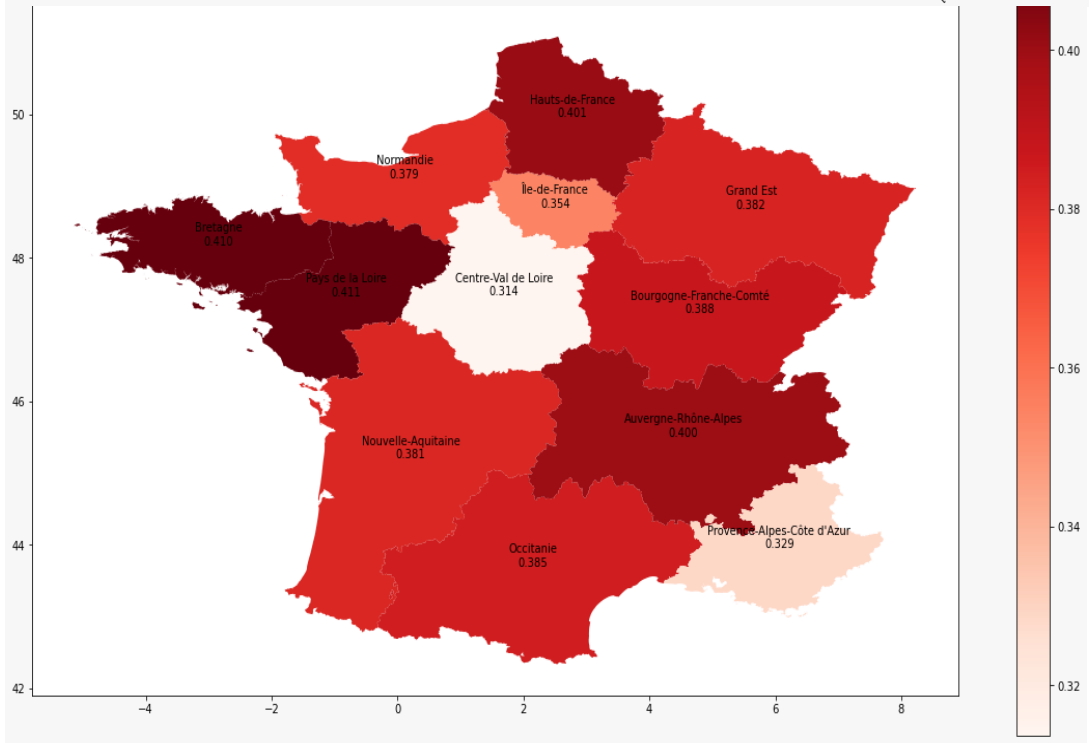
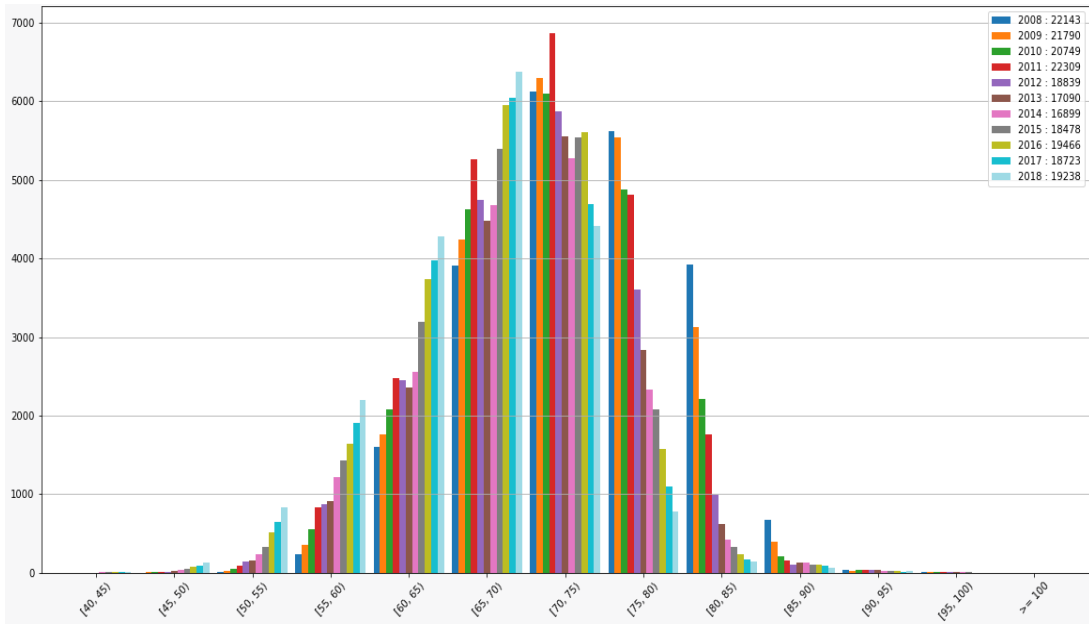


f-Distribution of first treatment according to age at diagnosis and years of diagnosis and regional distribution of treatments adjusted on PC diagnosed.

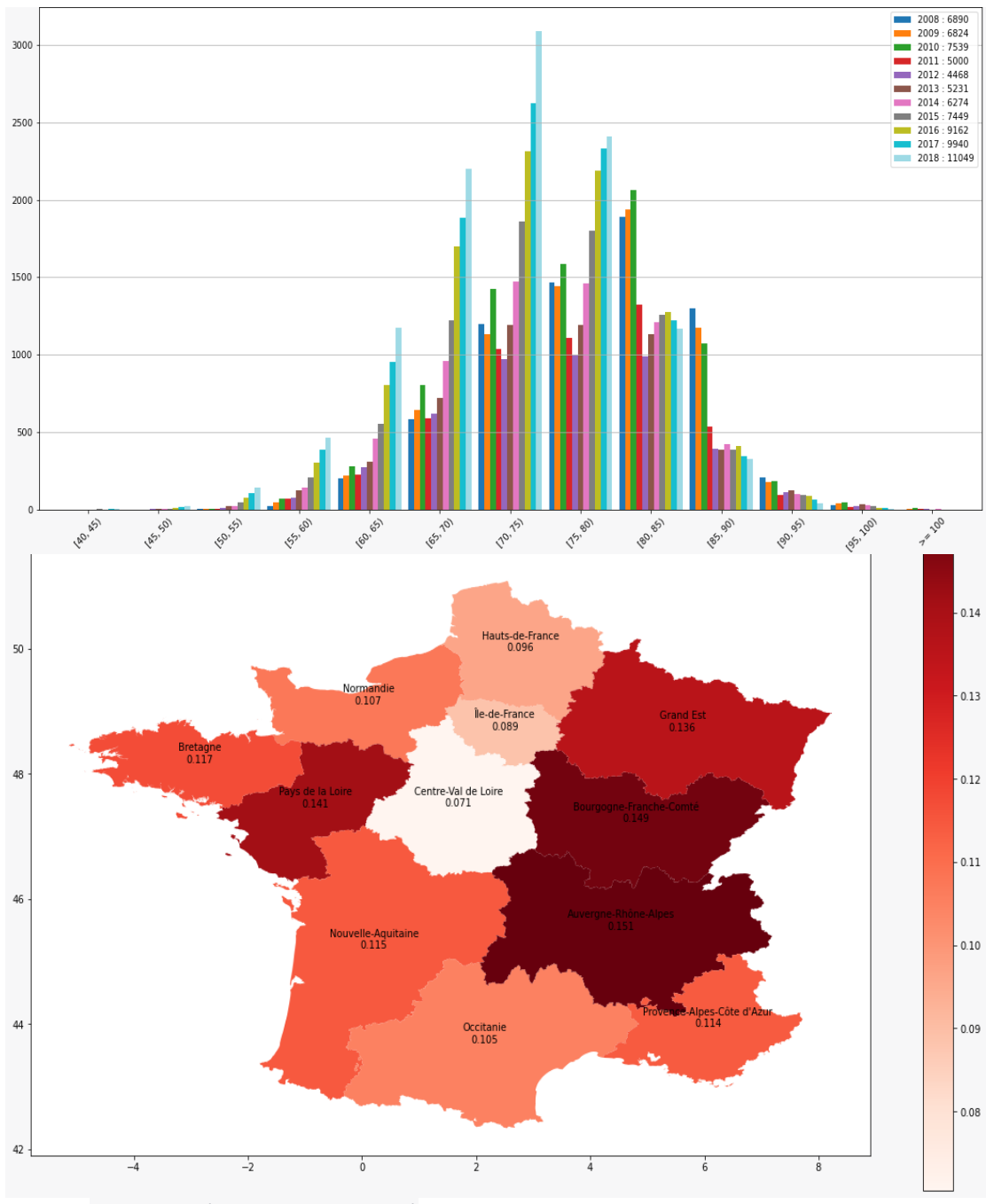
Brachytherapy



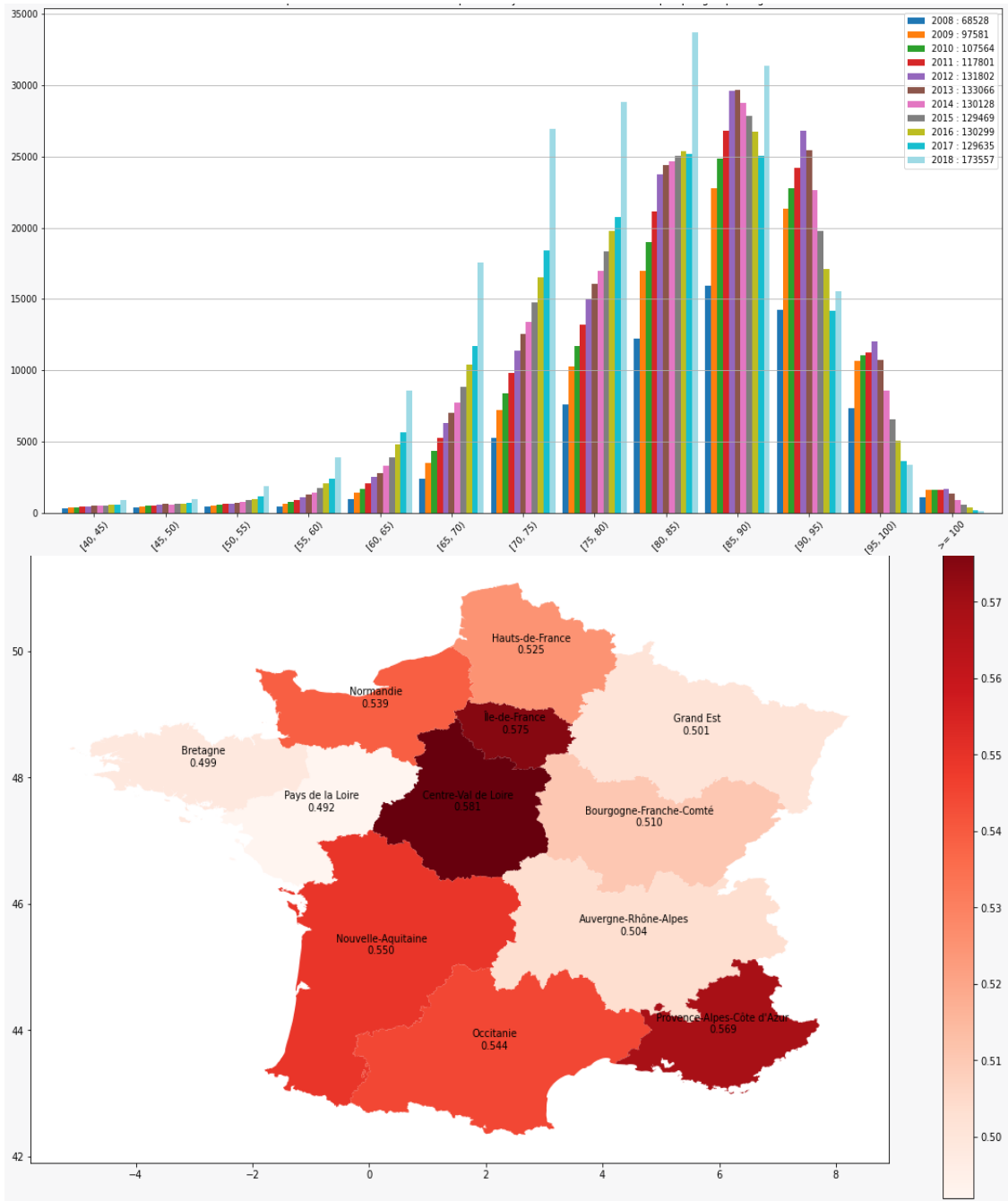
Radical prostatectomy



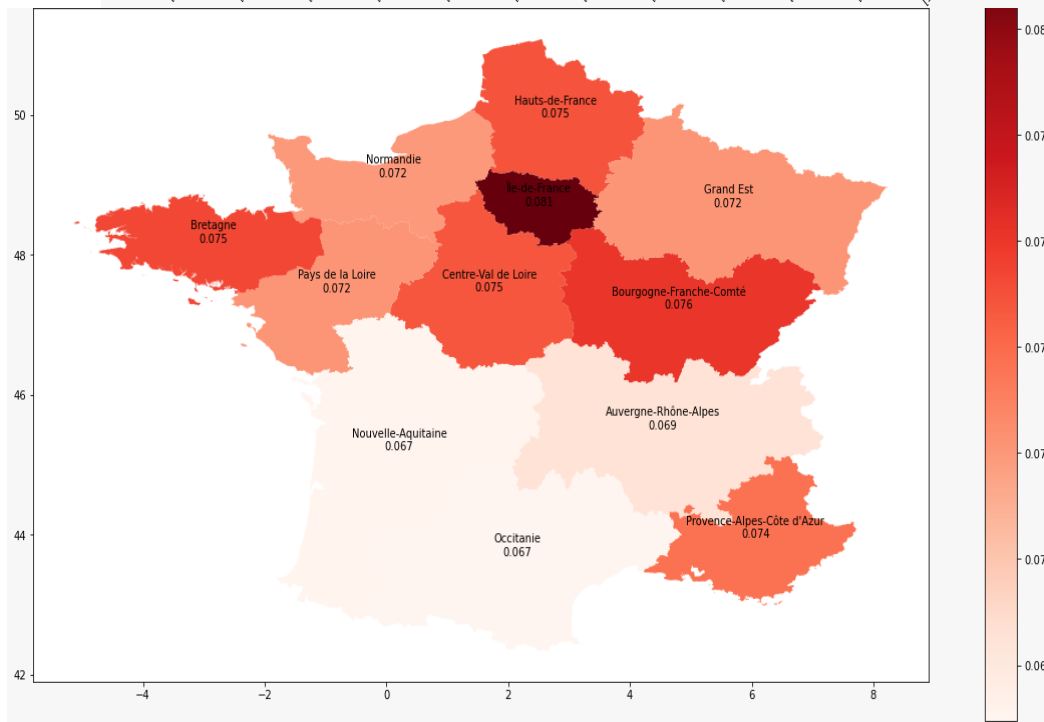
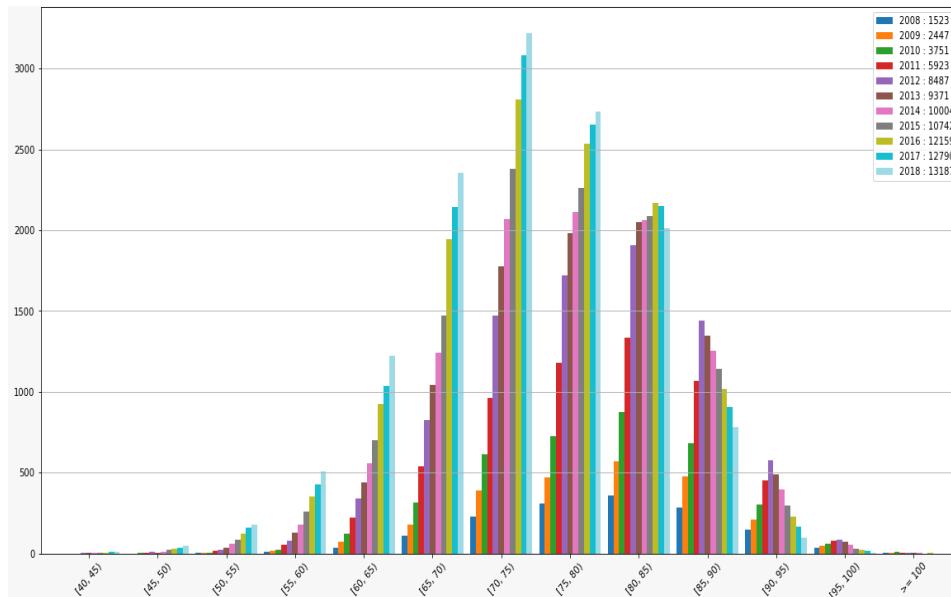
Radiotherapy (EBRT)



Castration (medical or surgical)



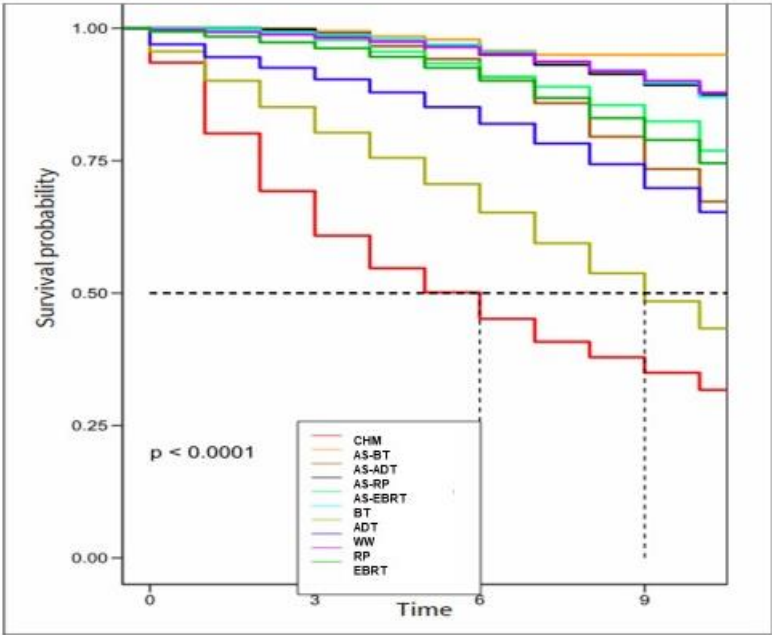
Chemotherapy



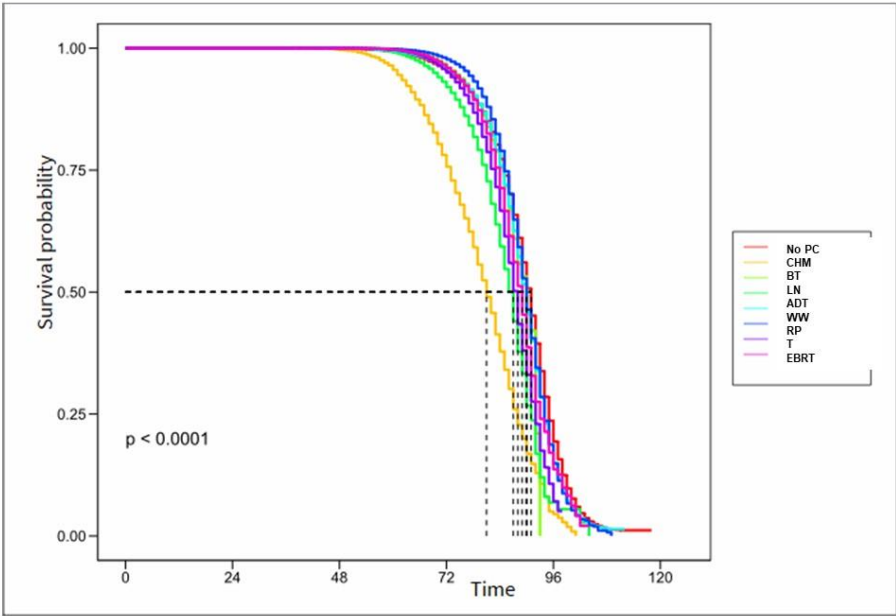
g-Age specific mortality of men in the prostate cancer and control populations according to age groups.

Age	Hazard ratio Cancer vs Controls (ref :1)	CI 95%<	CI95%>	p value
40-50	1.96	1.66	2.31	<0.0001
50-60	1.11	1.09	1.14	<0.0001
60-70	1.91	1.86	1.96	<0.0001
70-80	1.09	1.09	1.11	<0.0001
80-90	1.19	1.19	1.20	<0.0001

h- Overall survival according to first line management. The choice the first treatment reflects prognosis groups based on stage of the disease, age and co-morbidities.



i- Age specific mortality according to first line management. The choice the first treatment reflects prognosis groups based on stage of the disease, age and co-morbidities.



j- Regional distribution of PSA tests before diagnosis of PSA adjusted on total population observed.

